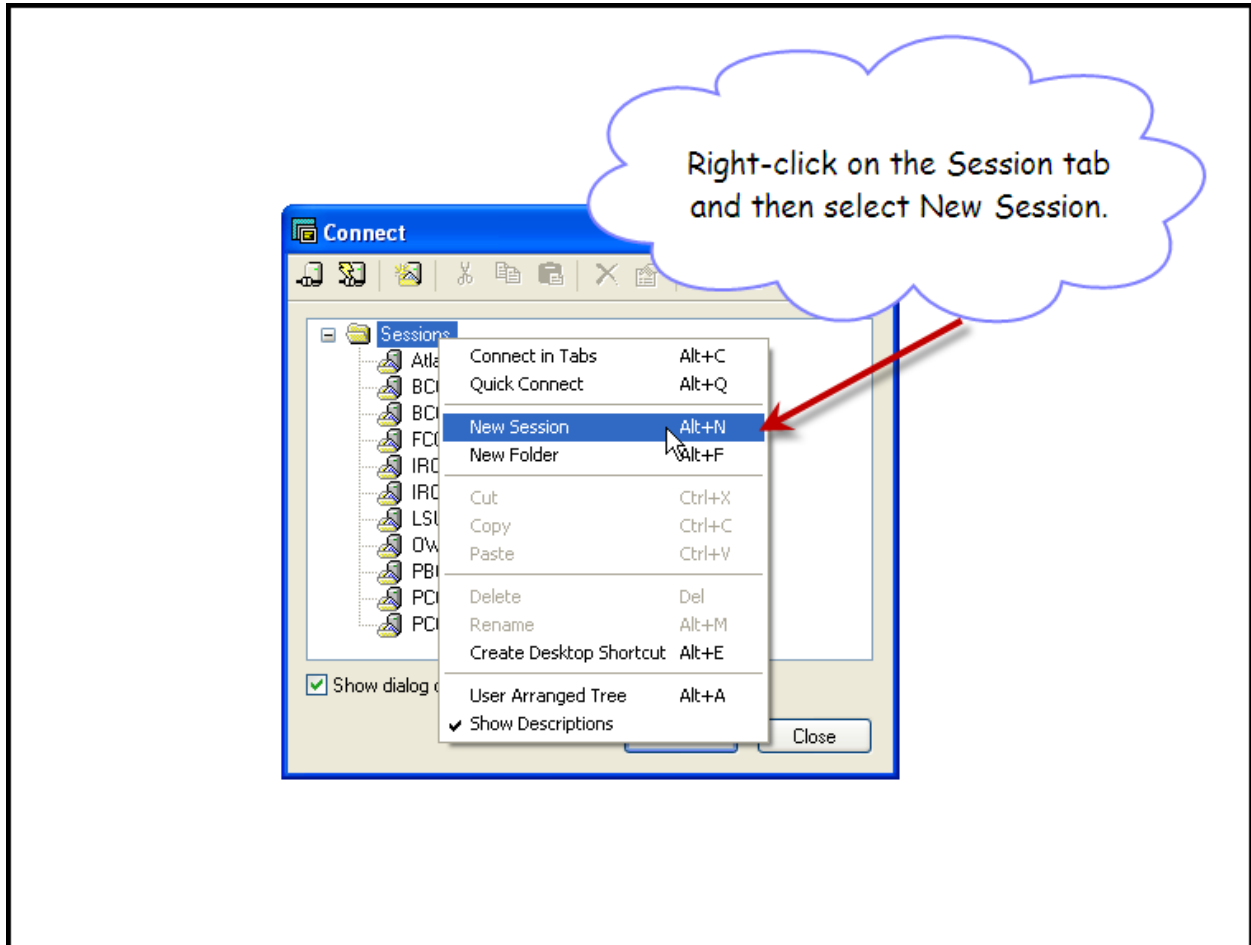
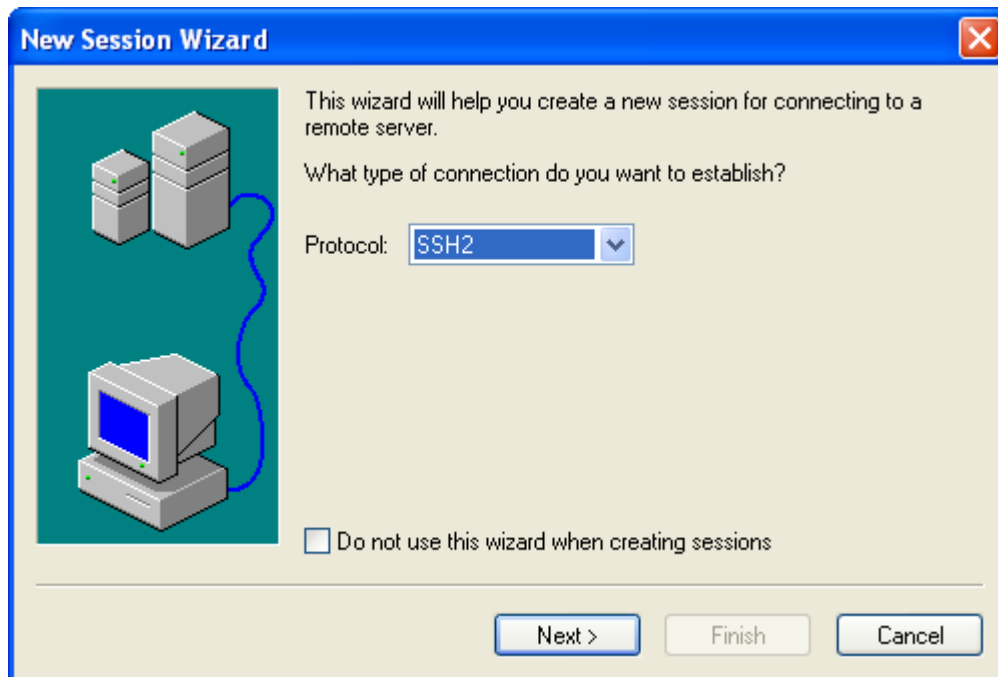


## SecureCRT Configuration

The following are screen shots of setup required to access [atlas.hetgroup.org](http://atlas.hetgroup.org) with SecureCRT.



The next screens will guide you through the process to define a New Session.



**New Session Wizard** [Close]

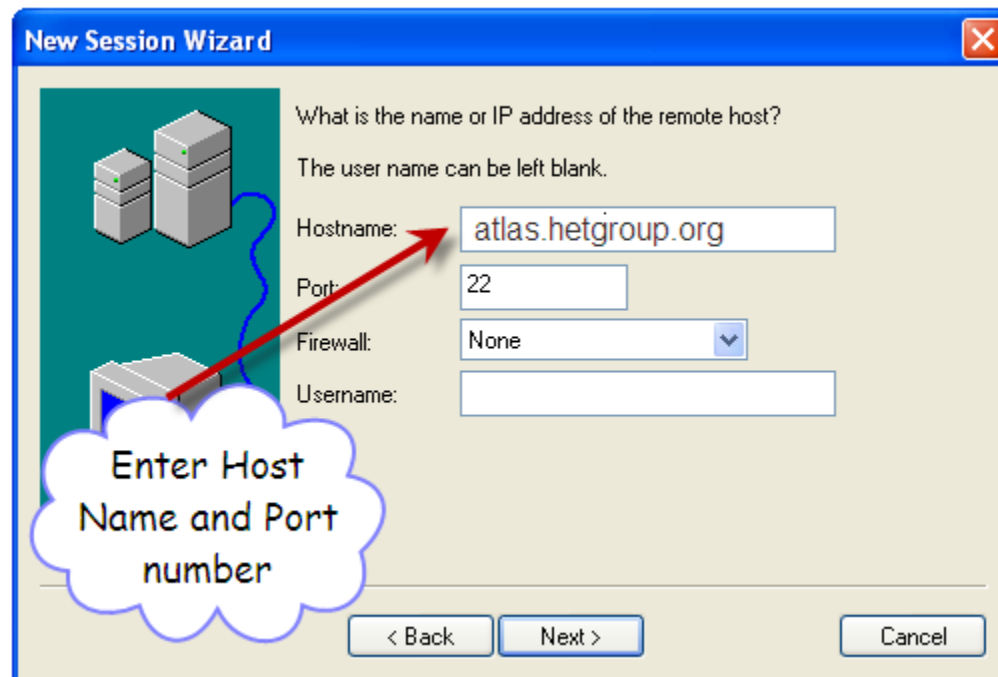
This wizard will help you create a new session for connecting to a remote server.

What type of connection do you want to establish?

Protocol:

Do not use this wizard when creating sessions

The first screenshot shows the 'New Session Wizard' window. It has a blue title bar with the text 'New Session Wizard' and a close button. The main area has a light beige background. On the left, there is a green rectangular area containing an illustration of a server rack and a desktop computer connected by a blue line. To the right of this illustration, the text reads: 'This wizard will help you create a new session for connecting to a remote server.' Below this is the question 'What type of connection do you want to establish?'. Underneath is a label 'Protocol:' followed by a dropdown menu showing 'SSH2'. At the bottom left of the main area is a checkbox labeled 'Do not use this wizard when creating sessions'. At the bottom of the window are three buttons: 'Next >', 'Finish', and 'Cancel'.



**New Session Wizard** [Close]

What is the name or IP address of the remote host?

The user name can be left blank.

Hostname:

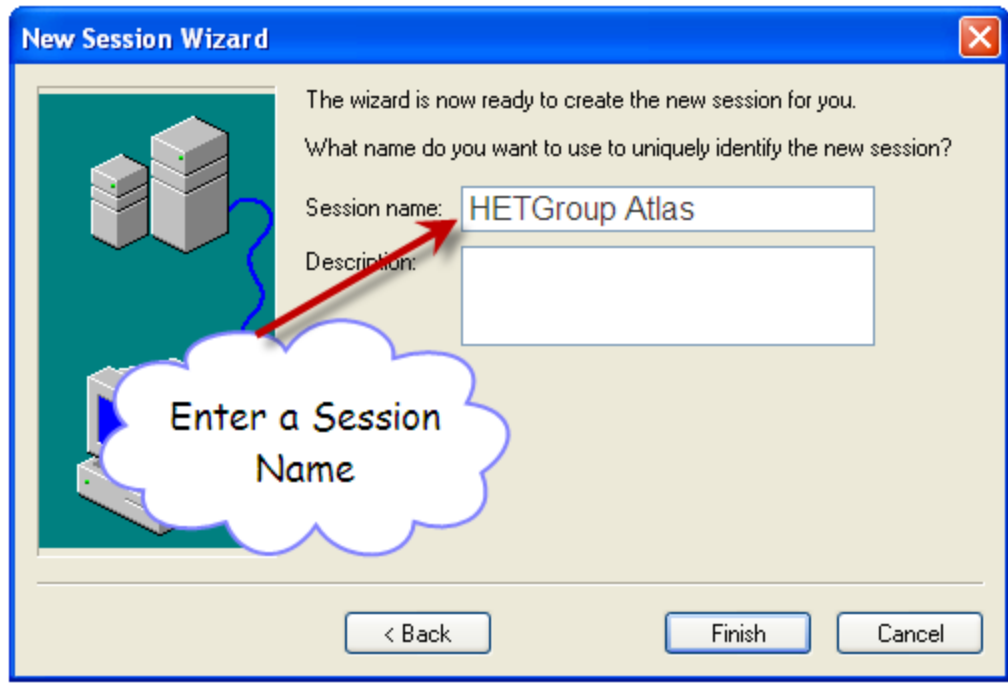
Port:

Firewall:

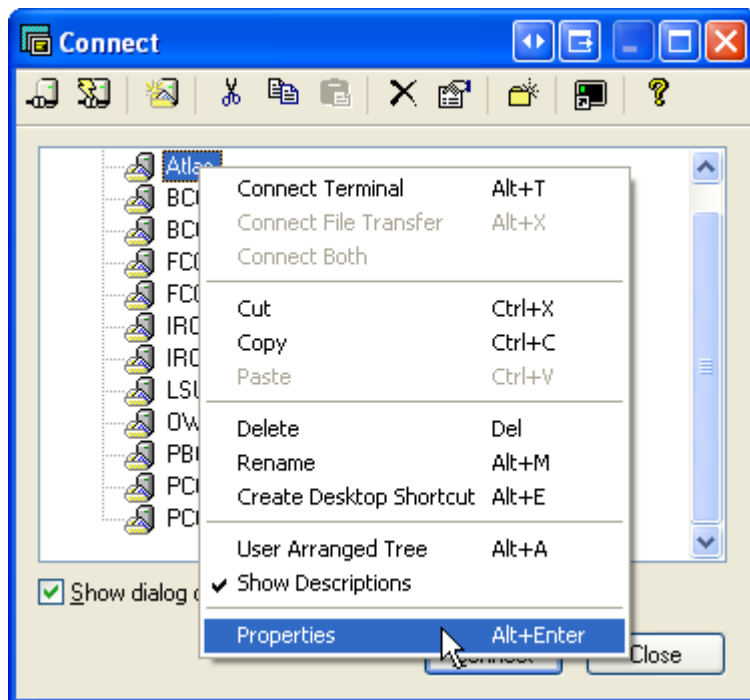
Username:

Enter Host Name and Port number

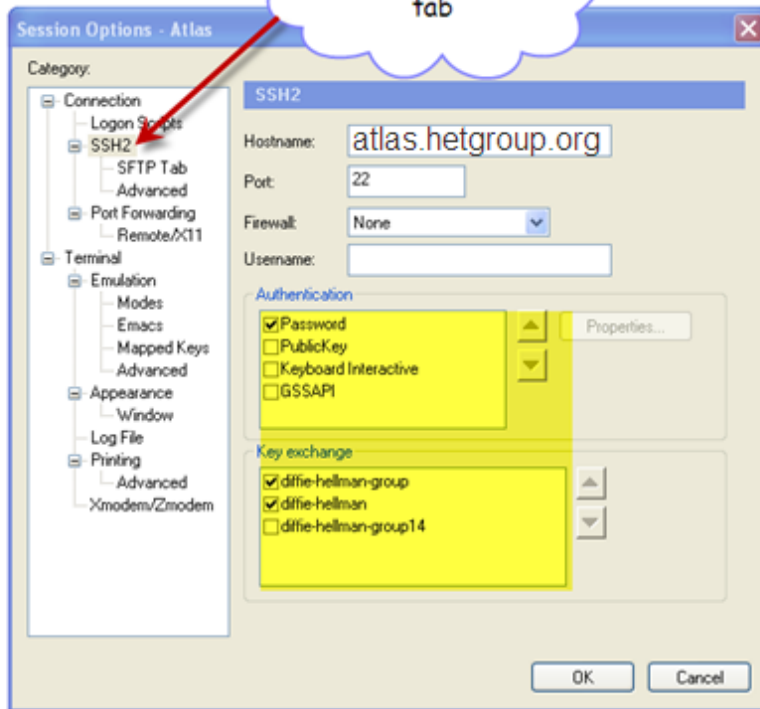
The second screenshot shows the next step in the 'New Session Wizard'. The title bar and close button are the same. The main area contains the question 'What is the name or IP address of the remote host?'. Below this is the instruction 'The user name can be left blank.'. There are four input fields: 'Hostname:' with the text 'atlas.hetgroup.org', 'Port:' with the text '22', 'Firewall:' with a dropdown menu showing 'None', and 'Username:' with an empty text box. A red arrow points from the 'Hostname:' label to its input field. A white speech bubble with a blue border and a drop shadow is positioned in the lower-left area, containing the text 'Enter Host Name and Port number'. At the bottom of the window are three buttons: '< Back', 'Next >', and 'Cancel'.



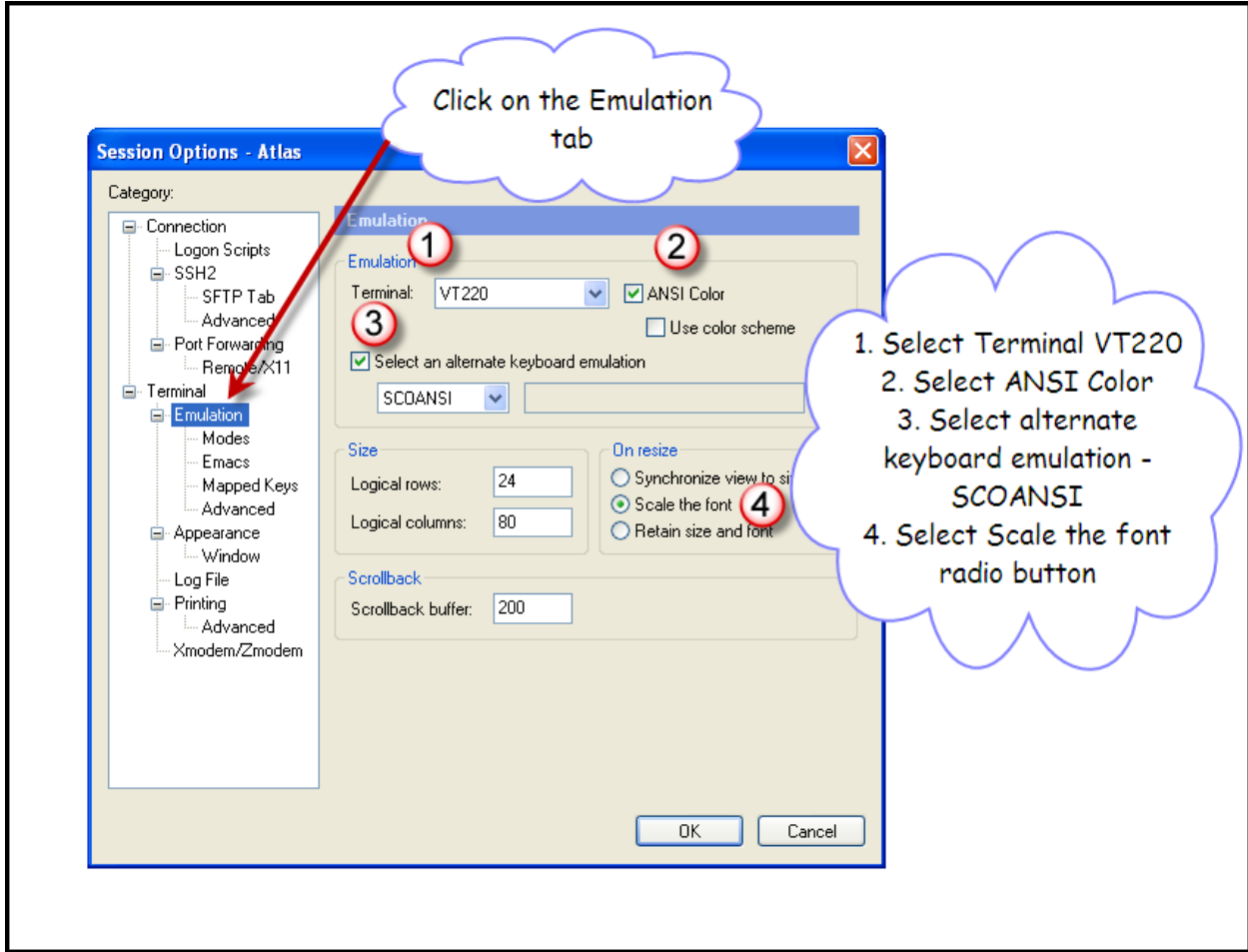
After the Session was added, right click on the Session name and select Properties.

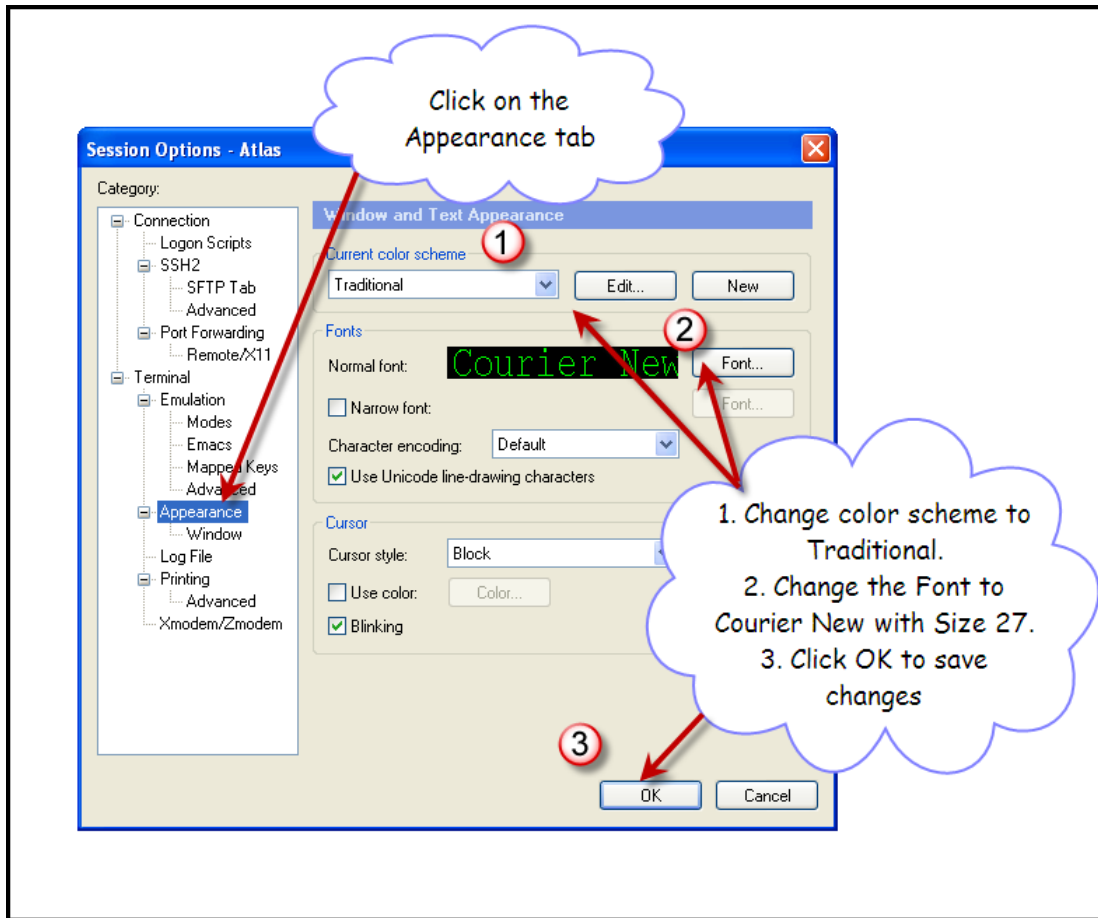


Click on the SSH2 tab



Verify the selected information





Click on Connect to Open the Session

